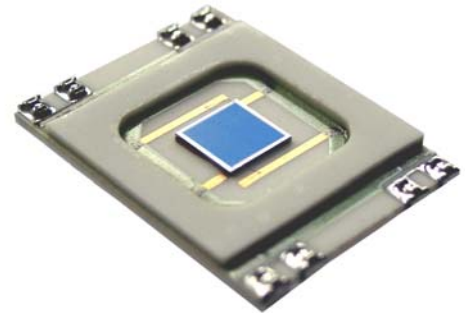


DL-16-7 KER 5.1 SMD

Position Sensing Photodiodes

Special characteristics:

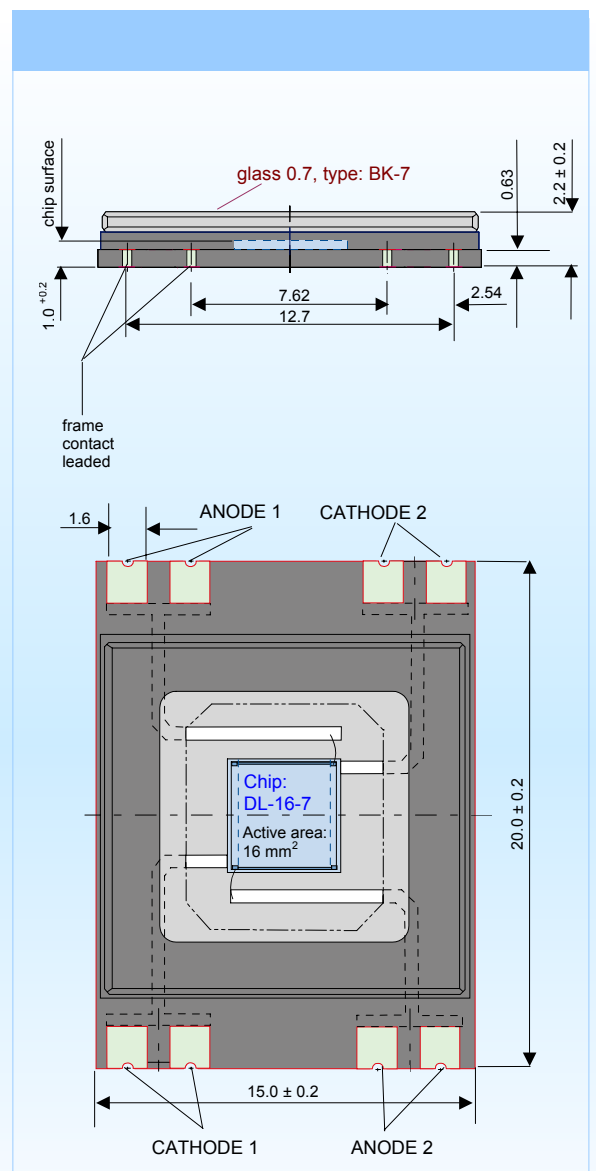
**dual-axis, duo-lateral PSD
active area 4 x 4 mm
high position resolution and
high linearity**



Parameters:	DL-16-7 KER 5.1 SMD
Active Area	4 x 4 mm 16 mm ²
Dark Current at 10 V	typ. 30 nA
Capacitance at 10 V, 100 kHz	typ. 15 pF
Spectral Responsivity at 633 nm at 850 nm	typ. 0,4 A/W typ. 0,62 A/W
Interelectrode Resistance at E = 0 lx	typ. 10 kΩ
Rise Time at 10 V, 50 Ω, 865 nm	max. 1 μs typ. 0,5 μs
Noise Limited Resolution at 632 nm, 0,5 μW	0,06 μm
Position Detection Error ¹⁾ at 632 nm	+/- 1%
Breakdown Voltage	typ. 15 V
Package	Ceramic S.M.
Operating Temperature	-20 ... +70°C
Storage Temperature	-60 ... +100°C

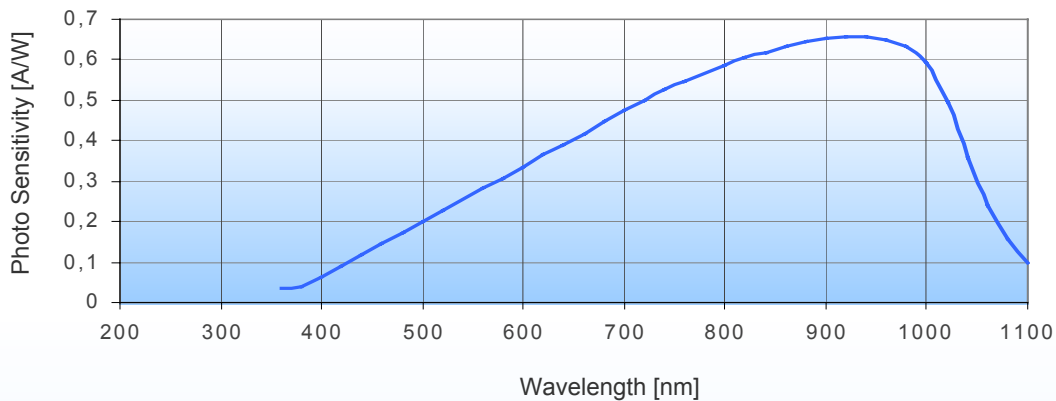
1) measurement conditions:

Spot size: 0,5 mm
Scan Interval: 1 mm
Wavelength: 633 nm



Spectral responsivity (A/W)

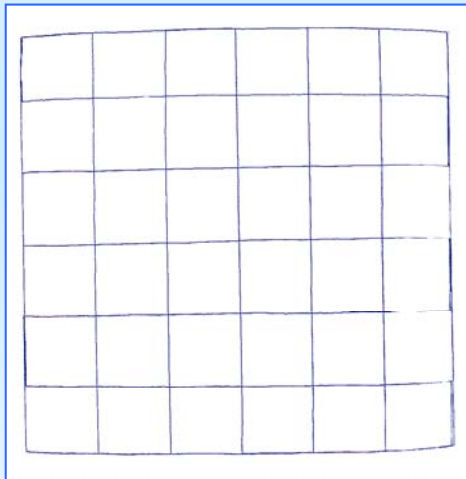
- series 7 -



Handling Precautions

- Soldering temperature 260°C for max. 10 s. The device must be protected against solder flux vapour!
- ESD – protection.
Standard precautionary measures are sufficient.
- Avoid touching the window with fingers!
- Careful cleaning with Ethyl alcohol possible.
- Avoid use of pointed and scratching tools!
- Store devices in conductive foam

Linearity Plot DL-16-7 KER 5.1 SMD



(Typical Plot)

- Scan Interval: 1 mm
- Spot: Ø 500 µm
- Wavelength: 633 nm

Germany :

Silicon Sensor GmbH

Ostendstr. 1
12459 Berlin
Germany
Phone: +49 (0)30-63 99 23 45
Fax: +49 (0)30-63 99 23 33
email: sales@silicon-sensor.de

International Sales:

Silicon Sensor GmbH

U.K. Office
Waterworks House
Fognam Down, Upper Lambourn
Berkshire RG 17 8RB
Phone: +44 (0)1488/ 7 39 33
Fax: +44 (0)1488/67 00 43
email: pnsilsensuk@btinternet.com

U.S.A. :

Pacific Silicon Sensor, Inc.

5700 Corsa Avenue #105
Westlake Village
CA 91362 USA
Phone: +1-818-706-3400
Fax: +1-818-889-7053
email: sales@pacific-sensor.com